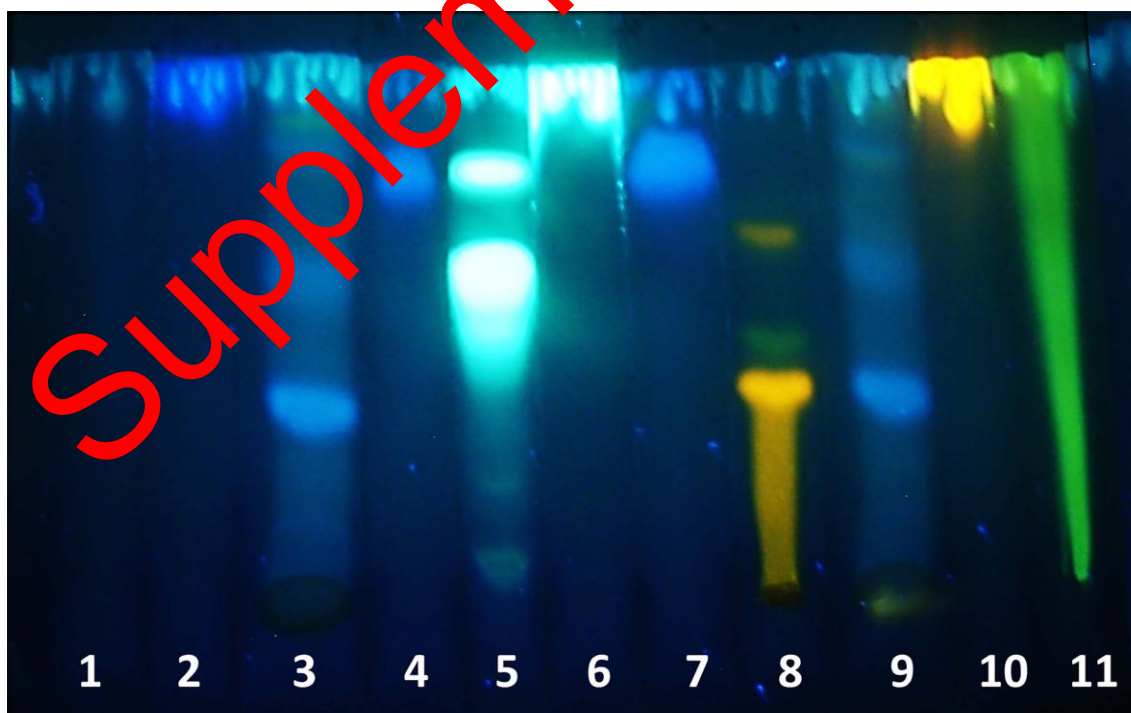


**Supplementary Figure S2. Alkaloids assays**

Orange (1 and 2) and white (3) colors indicate alkaloids precipitation. TLC (4) shows similar retention factor ( $R_f = 0.3$ ) for atropine (positive control) and TE.



**Supplementary Figure S3. Chromatographic profile of TE**

Lanes 3 and 9 was compared to  $\beta$ -sitosterol (1,  $R_f=0.9$ ), gallic acid (2,  $R_f=0.92$ ), tannic acid (4 and 7,  $R_f= 0.77$ ), chlorogenic acid (5,  $R_f=0.6$  and  $0.75$ ), caffeic acid (6,  $R_f=0.9$ ), rutin (8,  $R_f=0.47$  and  $0.67$ ), quercetin (10,  $R_f=0.88$ ) and apigenin (11,  $R_f$ =dragged spot). Note the predominant presence of phenolic constituents (blue colors) in TE.