

Figure 5. High pressure liquid chromatography (HPLC) chromatogram for *C. roseus* alkaloid extract treated with cell lysate from *E. coli* BL21/pET-26b (+)/*sgd*: **A.** control sample with protein produced by *E. coli* BL21/pET-26b (+). **B.** sample treated with 15 µg protein from *E. coli* BL21/pET-26b (+)/*sgd*. mAU: Milli-Absorption Unit.

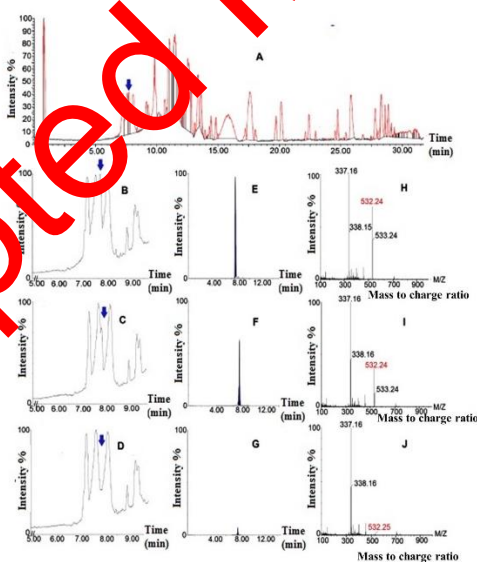


Figure 6. Liquid Chromatography-mass spectrometry (LC-MS) analysis of *C. roseus* alkaloid extract treated with cell lysate from *E. coli* BL21/pET-26b (+)/*sgd*: **A:** LC-trace of control reaction with protein produced by *E. coli* BL21/pET-26b (+); **B:** LC-trace of control reaction zoomed in (5- 10 min); **C:** reaction treated with 7.5 µg protein from *E. coli* BL21/pET-26b (+)/*sgd*; **D:** sample treated with 15 µg protein from *E. coli* BL21/pET-26b (+)/*sgd*. **E, F, G:** extracted ion chromatograms of strictosidine ($[M + H^+]$ m/z 532) in B, C and D reactions, respectively; **H, I, J:** mass spectrum at retention time 7.7-7.8 min for E, F and G, respectively.