













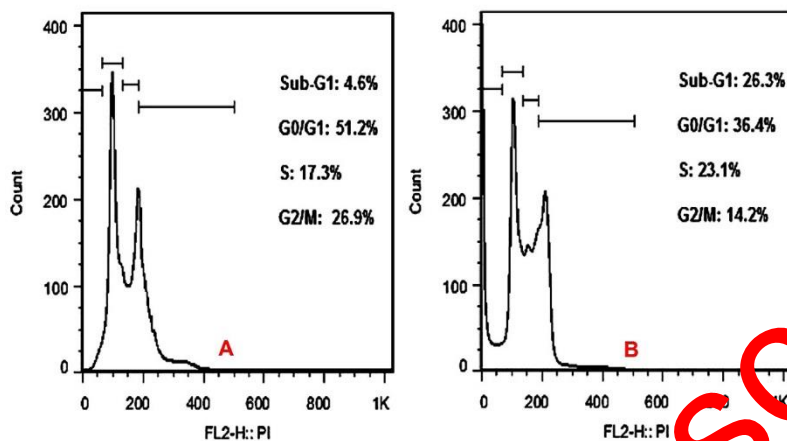








(AO) staining and concentrated into a crescent or granular that located in 1 side of cells in early apoptotic cells (treated cells). After 48 – 72 h treatment, late apoptosis (orange spots) are seen (C and D).



**Figure 7.** The results of cell cycle assay. Increasing the amount of cells in the sub G1 phase compared to control cells is seen. According to the results, the presence of cells in the sub G1 phase has increased from 4.6% in control (A) to 26.3% in the treatment for 72h (B).