

as high, moderate, or low of necrotic cells incidence. The bars are the frequencies of necrotic cells incidence in lung samples of mice lung cancer model.

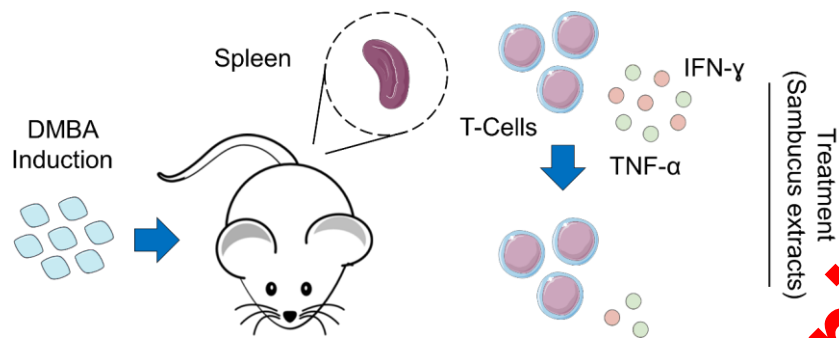


Figure 3. A schematic diagram showed DMBA administration in BALB/c mouse induces inflammation, however immunomodulation activity of *S. javanica* suppressed it by reducing pro-inflammatory cytokines production.