





Research Article



Combination of Estradiol with Leukemia Inhibitory Factor Stimulates Granulosa Cells Differentiation into Oocyte-Like Cells

Soudabe Yousefi^{1,2,3}, Maryam Akbarzadeh⁴, Jafar Soleimanirad¹, Kobra Hamdi⁵, Laya Farzadi⁵, Aalie Ghasemzadeh⁵, Mahdi Mahdipour¹, Reza Rahbarghazi^{1,5*#}, Mohammad Nouri^{1,5*#}

¹Stem Cell Research Center, Tabriz University of Medical Sciences, Tabriz, Iran.

²Department of Biochemistry and Clinical Laboratories, Faculty of Medicine, Tabriz University of Medical Sciences, Tabriz, Iran.

³Student Research Committee, Tabriz University of Medical Sciences, Tabriz, Iran.

⁴Stem Cell and Regenerative Medicine Institute, Tabriz University of Medical Sciences, Tabriz, Iran.

⁵Department of Applied Cell Sciences, Faculty of Advanced Medical Sciences, Tabriz University of Medical Sciences, Tabriz, Iran.

⁶Women's Reproductive Health Research Center, Tabriz University of Medical Sciences, Tabriz, Iran.

Article info

Article History:

Received: 11 Feb. 2020

Revised: 29 Apr. 2020

Accepted: 26 July 2020

published: 26 July 2020

Keywords:

- Granulosa cells
- Leukemia inhibitory factors
- Follicle-stimulating hormone
- Estradiol
- Oocyte-like cells

Abstract

Purpose: Previous studies have documented that cumulus granulosa cells (GCs) can trans-differentiation into different non-ovarian cells, showing their multipotentiality to repopulate the injured cells in ovarian tissue. The current experiment is aimed to assess the differentiation capacity of human cumulus GCs toward the oocyte-like phenotype *in vitro*.

Methods: GCs were isolated from healthy female volunteers subjected to *in vitro* fertilization or intra-cytoplasmic sperm injection (IVF-ICSI). The effect of different media supplemented with leukemia inhibitory factors (LIFs), 5 ng/mL estradiol, and 0.005 IU/mL follicle-stimulating hormone (FSH) were investigated to the differentiation of GCs toward oocyte-like phenotype via monitoring the expression of Oct3/4 and GATA-4 using flow cytometry analysis. The expression of genes such as *FIGLA*, *NOBOX*, and *SYCP3* was measured by real-time polymerase chain reaction (PCR) assay. We also assess morphological adaptation by using bright-field microscopic imaging.

Results: Exposure of GCs to LIFs increased the number of cells expressing stemness factor Oct3/4 coincided with the suppression of GATA-4 after 7 days ($P < 0.05$). We found that the transcript level of all genes *FIGLA*, *Nobox*, and *SYCP-3* decreased in cells after treatment with a FSH ($P < 0.05$). According to our data, the incubation of GCs with estradiol increased the expression of genes related to the oocyte-like phenotype.

Conclusion: Our finding revealed that the combination of LIFs and estradiol could induce the GCs' oogenesis capacity and thereby is possibly suggested as a therapeutic strategy during the occurrence of gynecological disorders.

Introduction

Infertility is a multifactorial disorder and induced by numerous environmental factors such as changes in lifestyle and nutritional habits.¹ Some conventional techniques such as *in vitro* fertilization/intra-cytoplasmic sperm injection (IVF-ICSI) are commonly used to circumvent the complications after the onset of infertilities. Unfortunately, conventional approaches do not always contribute to reliable results. Therefore, alternative approaches with the potential to improve IVF-ICSI efficiency are extensively under investigation.² Female infertility is originated from a variety of endogenous reasons such as hypothalamic dysfunction, premature ovarian failure, polycystic

ovarian syndrome or early menopause, and tube fallopian insufficiency. Nevertheless, the absence or reduction of follicles within ovaries and oogenesis suppression is thought of as the most leading cause of infertility. Recently, ovarian progenitor cells and their differentiation toward oocyte-like cells have been of great interest to restore the ovarian tissue competence.³⁻⁵ In mammals, oocytes are surrounded by a large number of granulosa cells (GCs) layers during folliculogenesis. After entering the prenatal stage, theca cells envelop the follicle containing oocytes. Theca cells in collaboration with GCs produce estrogen to provide structural integrity and maintain the synthesis of androgen substrates.⁶ The existence of stem cells in

#These authors contributed equally to this work.

*Corresponding Authors: Reza Rahbarghazi and Mohammad Nouri, Tel:+98 41 33373879; Fax: +98 41 33363870, Email: Rezarahbardvm@gmail.com and Email: Nourimd@yahoo.com

© 2021 The Author (s). This is an Open Access article distributed under the terms of the Creative Commons Attribution (CC BY), which permits unrestricted use, distribution, and reproduction in any medium, as long as the original authors and source are cited. No permission is required from the authors or the publishers.

follicular theca and ovarian epithelium was previously reported. For instance, Hubner et al revealed an inherent capacity of embryonic stem cells trans-differentiation into oogonia with normal meiosis. These cells were also able to recruit neighboring cells to generate follicle-like unites and blastocysts.⁷ In another study done by Bukovsky and colleagues, the differentiation capacity of ovarian tunica mesenchymal cells toward epithelial-like cells was found. These cells could pass through ovarian blood vessels, and play as ovarian germ cells. In the next steps, these cells participate in the reformation of follicles in adult women post-puberty.⁸ Further studies on a variety of pluripotent cells showed that GCs are capable to express stem cell markers.⁹ In 2012, Yamanaka proposed four factors OCT4, SOX2, KIF4, and c-MYC as pluripotent stem cells markers.¹⁰ Later, the expression of these factors in GCs was shown in various studies, indicating the suitability of these cells for reprogramming.^{11,12} Considering the stemness feature of GCs and ease of extraction during surgery and biopsy procedure, it is noteworthy to mention that a large GCs number could be achieved for *in vitro* culture systems. Here, we aimed to investigate the oocyte-like differentiation of GCs after exposure to leukemia inhibitory factors (LIFs), follicle-stimulating hormone (FSH), and estradiol (E_2).

Materials and Methods

Granulosa cells expansion

In this study, follicles were sampled by transvaginal ultrasound-guided aspiration from the women patients who referred to the infertility clinic for ICSI procedure. All candidates signed the informed consent form. Inclusion criteria were regular monthly ovulation, the mature oocytes, and normal values of thyroid and sex hormones. Patients with the history of polycystic ovaries, ovulation disorders, dysfunction in sex hormones, and HIV also CMV diseases were excluded from the study. Follicular fluid (FF) was aspirated by an expert embryologist, and then the GCs surrounding oocytes were separated and transferred into a sterile falcon tube containing an ISM1 medium. After a quick spin, the cells were washed twice with sterile phosphate-buffered saline (PBS) and centrifuged at 1200 rpm for 10 minutes to remove FF. Then, cells were cultured as described in the next section. The aspirated FF was also centrifuged at 3000 rpm for 10 minutes, inactivated at 56°C for 45 minutes and filtered. The filtered liquid was stored at -20°C until used.

Cell culture

GCs were expanded in DMEM/F12 medium (Gibco) containing 10% FF, 2% fetal bovine serum (FBS; Gibco) and %1 penicillin-streptomycin (Sigma) solution. 3×10^5 cells/well were placed in each well of 6 well-plates (TPP) and maintained at 37°C in a humidified atmosphere and 5% CO_2 . Culture media were replenished every 48 hours. In the second week, GCs were incubated with 1000 IU LIF

(Peprotec) to induce a stem cell-like phenotype. From the beginning of the 3rd week, cells were incubated in DMEM/F12 medium supplemented with 10% FF, 2% FBS, 10 ng/mL basic fibroblast growth factor (bFGF; Sigma), 10 μ L/mL non-essential amino acids (Invitrogen), 0.1 μ L/mL retinoic acid (Sigma), 10 ng/mL epidermal growth factor (EGF; Sigma) and 1 mM 2-Mercaptoethanol. In this study, cells were then divided into five main groups as follows (Figure 1); (I) Control, (II) cells received 0.0025 and 0.005 IU/mL FSH and III: cells were incubated with 5 and 10 ng/mL E_2 . The medium was replaced every 24 hours and the cells were passaged over 5 weeks.

Detecting E2 receptor (ER) by immunofluorescence assay

For this purpose, 10^4 GCs were placed in each well of 8-well slide chambers. After 24 hours, GCs were fixed by using a pre-cooled paraformaldehyde solution (4% w/v). Then, cells were incubated in 1% Triton-X100 solution (Sigma-Aldrich) for 5 minutes for permeabilization. To detect ER, rabbit anti-human ER (dilution: 1:500; Abcam) and Texas Red-conjugated antibody (Dilution: 1:2000, Abcam) were used. For nuclear staining 200 μ L, DAPI (1 μ g/mL) was poured onto wells and the slides were imaged using fluorescence microscopy.

Flow cytometry analysis

The flow cytometry analysis was done to confirm the

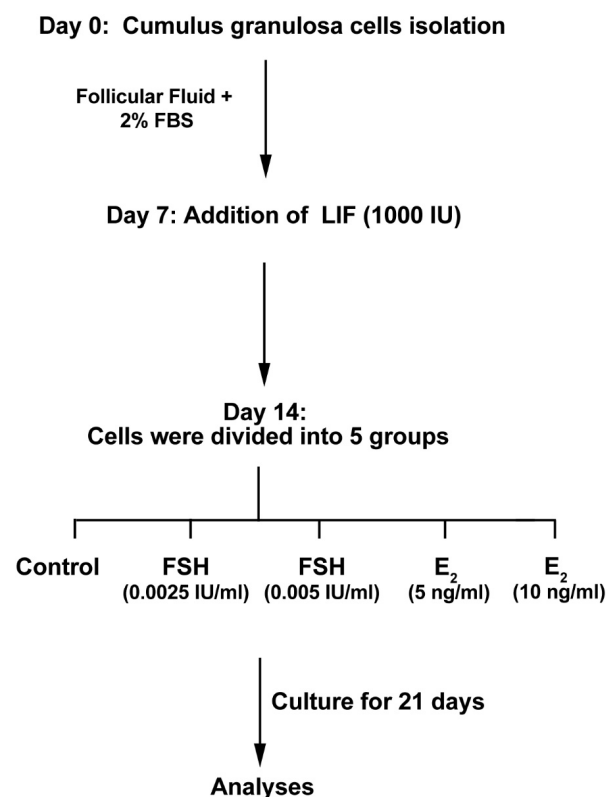


Figure 1. Diagram of the experimental procedure of cumulus granulosa cells exposed to leukemia inhibitory factor (LIF) and estradiol (E_2), and follicle-stimulating hormone (FSH) throughout 35 days to assess differentiation potential toward oocyte-like cells.

existence of stem cell-specific marker Oct3/4 (BD) and granulosa cell-specific marker GATA4 (BD). To this end, 7 and 14 days after treatment with different factors, cells were detached from the plates using 0.25% Trypsin-EDTA solution (Gibco). Permeabilization was performed by using the TritonX-100 solution (0.1% w/w). A panel of primary antibodies including Oct3/4 and GATA4 was used. Appropriate fluorescent secondary antibodies were applied for cell staining. The BD FACSCalibur™ system and FlowJo software (ver.7.6.1) were used to perform flow cytometry analysis. This experiment was used in triplicate.

Real-time PCR assay

Expression of *FIGLA*, *NOBOX*, and *SYCP3* was evaluated using real-time polymerase chain reaction (PCR) assay. On day 14, the whole RNA was extracted by using an RNX PLUS Kit (Cinnagen, Iran). The content of RNA was measured by a NanoDrop (2000c spectrophotometer; Thermo Fisher). We used the cDNA synthesis kit (Bioneer) to synthesize cDNA. The real-time PCR analysis was performed by Corbett Rotor-Gene 6000 machine (Corbett Life Science) in a final volume of 14 μ L reaction system containing 0.8 μ L of each primer (Table 1), 7 μ L of SYBR green reagent (Takara Bio, Japan), 0.8 μ L of cDNA template, and nuclease-free water.

Statistical analysis

All experiments were done in three independent replicates. Results were reported as mean \pm SD. Statistical analyses were performed using GraphPad Prism (version7.0). Significant differences were calculated using a one-way analysis of variance (ANOVA) and a Student *t* test. The mean difference between the data was significant at the level of **P* < 0.05, ***P* < 0.01 and *** *P* < 0.001.

Results and Discussion

Immunofluorescence staining showed typical markers in cultured granulosa cells

We examined the existence of ER in GCs using IF imaging (Figure 2A). As presented in Figure 1A, the cellular distribution of ER was identified in GCs obtained from human samples. Here, we showed a dim expression of ER in cultured GCs. These results showed that GCs had the

potential to express ER, indicating an inherent cell ability to respond to E_2 .

Changes in the levels of Oct3/4 and GATA-4 in granulosa cells treated with leukemia inhibitory factor

Flow cytometry analysis showed that GCs could express Oct3/4 14 days after incubation with LIF (Figure 2B). Compared to non-treated cells at initial seeding time, the percent of Oct3/4 positive GCs were reached $38.2 \pm 3.8\%$ on day 14 ($P_{\text{Day 14 versus Day 0}} < 0.01$; $P_{\text{Day 7 versus Day 0}} < 0.05$). These data confirm stemness-like features in GCs after exposure to the LIF. Besides, the level of GATA-4 reached to minimum levels, from $79.2 \pm 9.1\%$ to $11.1 \pm 4.4\%$, at the end of incubation time ($P_{\text{Day 14 versus Day 0}} < 0.001$; Figure 2B). We also found a significant drop in the level of GATA-4 coincided with the induction of Oct3/4 in GCs. These data showed the potential of LIF to induce multipotentiality in the GCs. Parte et al first reported the expression of the pluripotent genes, including STAT-3, NANOG, Oct-4, TERT, and Sox-2, in the ovarian epithelium.¹³ Virant-Klun et al identified adult stem cells in the human ovaries with the ability to trans-differentiate into oocyte-like cells and form parthenote-like complexes.¹⁴ Studies pointed multipotent stem cells could commit to germ cell lineages and functional gametes by applying numerous differentiation methodologies, including the addition of LIF or FF to the culture medium with ovarian GCs.¹⁵⁻¹⁸ LIF, as one of the most studied pro-pluripotency factors, promotes the self-renewal by activating various signaling pathways such as STAT3 and BMP4 and MAP kinase pathways.¹⁹ This factor is secreted from the outside of the fetus, as well as many other types of mature cells such as endometrial cells, fibroblasts, bone cells, monocytes, macrophages, and T lymphocytes. LIF initiates intracellular signaling pathways after binding to receptors LIFR and gp130.^{18,20,21} The cell distribution of the CD29, POU5F1, CD90, CD44, CD166, CD105, and CD117 factors was reported on the surface of GCs by Kossowska-Tomaszczuk et al.²²

Real-time PCR analysis showed up-regulation of oocyte-related genes

Real-time PCR analysis showed the up-regulation of *FIGLA-a*, *Nobox*, and *SYCP-3* in GCs treated with 5 ng/

Table 1. Primer list

Gene	Primer sequence	Accession number	Annealing (°C)
GAPDH	F: 5'-AAGCTCATTTCCTGGTATGACAACG-3'	NM_002046.3	58
	R: 5'-TCTTCCTCTGTGCTCTTGCTGG-3'		
FIGLA	F: 5'-CCAAGGAGCGTGAGCGGATAA-3'	NM_001004311.3	60
	R: 5'-TACTATAGCTCTGCTCATCTGG-3'		
NOBOX	F: 5'-CTGATGGATGTTGCTGGCAGTGA-3'	NM_001080413.3	59
	R: 5'-AAGGGGAAAGTGGGGAGGTAGGG-3'		
SYCP ₃	F: 5'-CTCAGAAGCGTCCGGGAGAAG-3'	NM_001177948.1	61
	R: 5'-CTCCGCAATGGCCGAGGACCAG-3'		

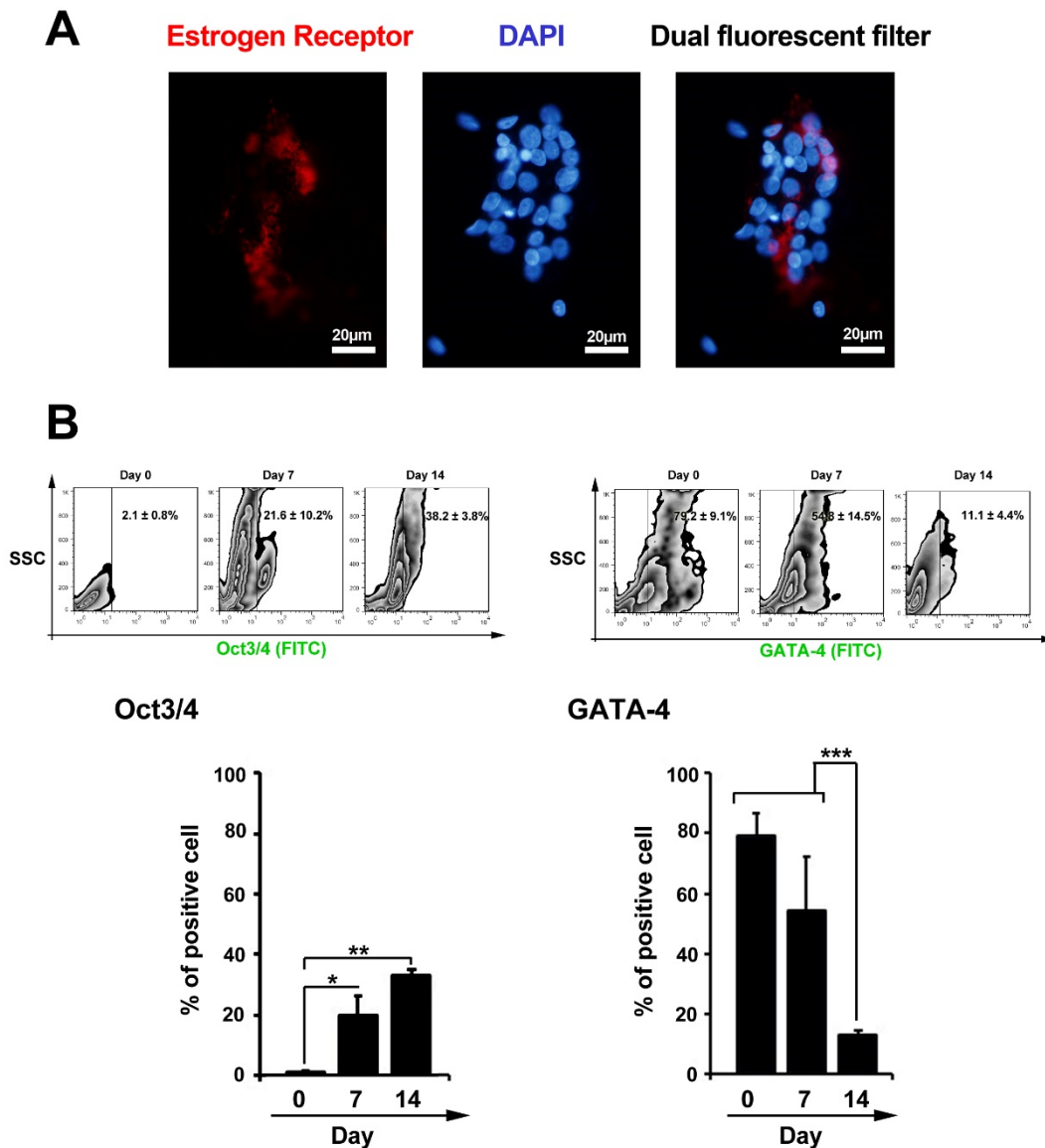


Figure 2. Measuring estrogen receptors in cultured granulosa cells using immunofluorescence staining (A). Data showed a dim expression of estrogen receptors in granulosa cells at passage three. Flow cytometric analysis of Oct3/4 and GATA-4 in granulosa cells 7 days after treatment with leukemia inhibitory factor (B). Data showed statistically significant induction and reduction of Oct3/4 and GATA-4 in granulosa cells, respectively (n=3); One-way ANOVA with Tukey post hoc test * $P < 0.05$; ** $P < 0.01$ and *** $P < 0.001$).

mL E_2 and these effects were less in groups received 10 ng/mL E_2 . According to these data, it seems that E_2 enhanced oocyte-like stemness in GCs in a certain dose (Figure 3). In contrast, data showed that FSH treatment, at doses 0.0025 IU and 0.005 IU per ml, suppressed the activity of *FIGLA-a*, *Nobox*, and *SYCP-3* compared to the control cells (Figure 3). *In vitro* studies have further demonstrated that GCs are capable of differentiation into lineages of neurons, osteoblasts, and chondrocytes which are not observed in normal ovarian follicles.²² Varras et al showed that *DAZL* mRNA, a typical germ cell marker, was not detectable in GCs, suggesting that GCs are not originated from primordial germ cells¹². The maintenance of GCs stemness is one of the most important and considerable issues in the trans-differentiation of the GCs into another cell lineage.²³

Morphological adaptation was shown in granulosa cells after exposure to estradiol and follicle-stimulating hormone

Photomicrographs showed the ability of freshly isolated GCs to attach the bottom of the culture. GCs exhibited an epithelial-like appearance after 7 days post-seeding (Figure 4A). The addition of LIF to culture medium generated micro-aggregates and colonies. Using FSH and E_2 , colonies became more compact and large gaps were evident between the colonies (Figure 4A). On day 35, single oocyte-like cells were observed with a round shape (Figure 4B). It has been elucidated that FF contains various factors secreted from GCs, theca cells and oocytes, and plasma, namely GDF9b, GDF9, stem cell factor (SCF), bFGF, and E_2 .^{24,25} These factors are involved

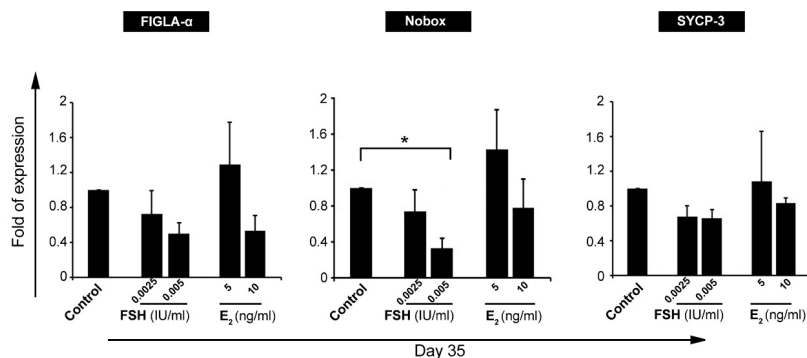


Figure 3. Real-time PCR analysis of oocyte-related genes, *FIGLA-α*, *Nobox*, and *SYCP-3*, in granulosa cells after exposure to follicle-stimulating hormone (FSH) and estradiol (E_2) ($n=3$). Gene expression analysis confirmed the significant reduction of *Nobox* gene in granulosa cells after treatment with FSH. These data showed the potency of FSH in inhibition granulosa cell differentiation toward oocyte-like cells.

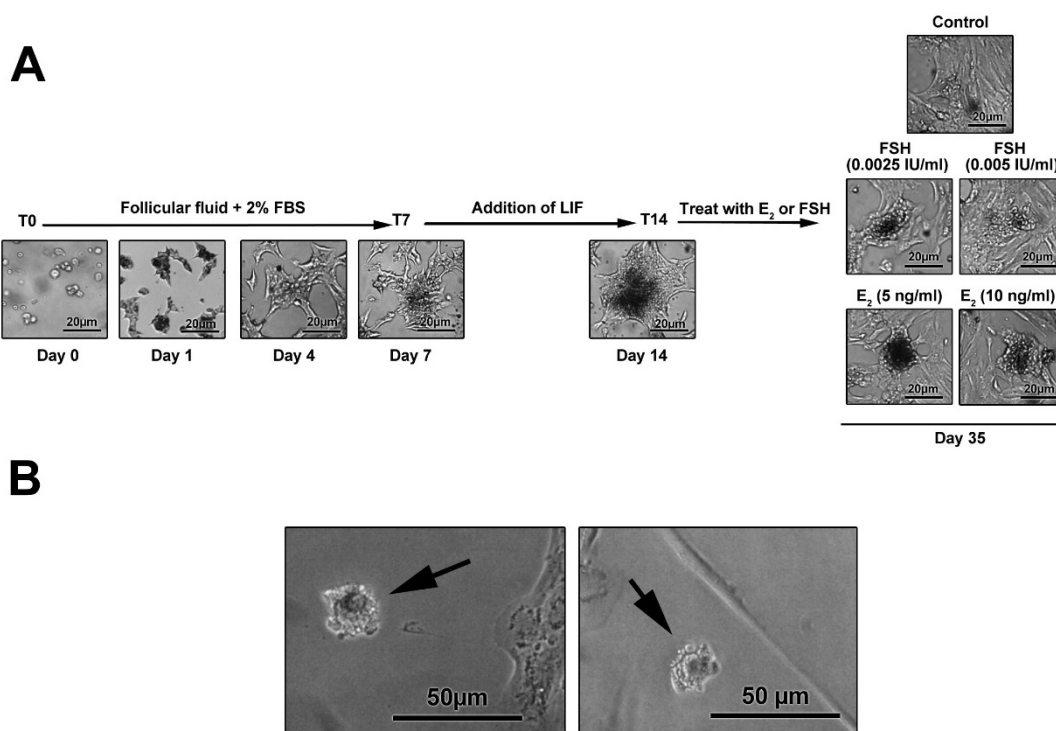


Figure 4. The morphological adaptation of granulosa cells cultured in different media supplemented with leukemia inhibitory factor (LIF), estradiol (E_2), and follicle-stimulating hormone (FSH) after 35 days. Cell morphology in E_2 -treated cells (**B**). After the completion of the experimental protocol, cells lose epithelial-like appearance and acquire a round shape. The cell spreading and flattening are confined and the extent of projection decreased following treatment with LIF and E_2 . It seems that the up-regulation of oocyte-like genes, such as *Nobox*, in granulosa cells coincides with prominent morphological adaptation.

in the regulation of follicular development.²⁴ In a study conducted by Virant-Klun et al, the culture of epithelial cells in a medium with FF generated round-shaped-cell clusters with alkaline phosphatase activity and primitive oocyte phenotype and up-regulation of SOX-2 and SSEA-4.²⁶ We, here, showed that the exposure of GCs to E_2 and FF contributed to the formation of colonies and oocyte-like cells. These cells can synthesize factors OCT4, SOX-2, etc., which are known pluripotency markers of stem cells.¹⁷ Dyce et al tested several culture systems to identify conditions in which porcine skin-derived sphere

cells could differentiate into germ-cells. They documented that FF advocates the induction of markers expression coincided with germ-cell differentiation.¹⁷ These data support the notion that the combination of FF with the appropriate factor levels could promote GCs orientation to different lineage, especially oocyte-like cells. In line with this statement, some previous studies documented that FSH and E_2 have beneficial effects on the antrum-like reorganization, proliferation, differentiation as well as endocrine function of the GCs.²⁷⁻²⁹ Unlike these results, we did not find any changes in the level of oocyte-associated

markers after cell exposure to FSH. Robker and Richards showed that E_2 and FSH can directly and independently regulate the process of the cell cycle in GCs by increasing levels of cyclin D2.²⁹ However, there is not enough evidence about the effects of the FSH and E_2 on the trans-differentiation capacity of GCs into oocyte-like cells.

Discussion

Nowadays, a lot of research is done to address the molecular mechanisms causing the low quality of oocytes.^{13,30} Identification of a subpopulation of GCs to exhibit a pluripotent and self-renewing potential opens new horizons in augmenting new therapeutic strategies for patients suffering from ovarian insufficiencies.^{22,26} We showed that the culture of GCs with LIF increased the expression of OCT3/4 while down-regulated GATA-4 in GCs. Additionally, the treatment of GSs with FSH diminished the expression of oocyte-related genes. E_2 can promote the expression of *FIGLA-a*, *Nobox*, and *SYCP-3*. These data support the notion that E_2 could efficiently preserve the stemness characteristics of the GCs as compared to FSH-treated cells.

Conclusion

In conclusion, our study showed that the exposure of the GCs to the LIF and E_2 efficiently preserves the GCs multipotentiality by inducing the expression of oocyte-like cell genes. This approach offers a novel strategy in the medication of infertility and ovary restoration in the treatment of gynecological disorders.

Ethical Issues

All experiments and procedures were conducted in compliance with the ethical principles of Tabriz University of Medical Science, Tabriz, Iran (TBZMED.REC.1394.100). This study was supported by a grant from Tabriz University of Medical Sciences.

Conflict of Interest

None declared.

Acknowledgments

The authors kindly thank Dr. Shaneband to design primers.

References

- Källén B. Maternal morbidity and mortality in in-vitro fertilization. *Best Pract Res Clin Obstet Gynaecol* 2008;22(3):549-58. doi: 10.1016/j.bpobgyn.2008.02.001
- Youssry M, Orief Y, Ozmen B, Al-Hasani S, Zohni K. Human sperm DNA damage in the context of assisted reproductive techniques. *Iran J Reprod Med* 2007;5(4):137-50.
- Letourneau JM, Ebbel EE, Katz PP, Oktay KH, McCulloch CE, Ai WZ, et al. Acute ovarian failure underestimates age-specific reproductive impairment for young women undergoing chemotherapy for cancer. *Cancer* 2012;118(7):1933-9. doi: 10.1002/cncr.26403
- Bukovsky A, Caudle MR. Immunoregulation of follicular renewal, selection, POF, and menopause in vivo, vs. neo-oogenesis in vitro, POF and ovarian infertility treatment, and a clinical trial. *Reprod Biol Endocrinol* 2012;10:97. doi: 10.1186/1477-7827-10-97
- Consensus on infertility treatment related to polycystic ovary syndrome. *Hum Reprod* 2008;23(3):462-77. doi: 10.1093/humrep/dem426
- Latham KE, Bautista FD, Hirao Y, O'Brien MJ, Eppig JJ. Comparison of protein synthesis patterns in mouse cumulus cells and mural granulosa cells: effects of follicle-stimulating hormone and insulin on granulosa cell differentiation in vitro. *Biol Reprod* 1999;61(2):482-92. doi: 10.1095/biolreprod61.2.482
- Hübner K, Fuhrmann G, Christenson LK, Kehler J, Reinbold R, De La Fuente R, et al. Derivation of oocytes from mouse embryonic stem cells. *Science* 2003;300(5623):1251-6. doi: 10.1126/science.1083452
- Bukovsky A, Svetlikova M, Caudle MR. Oogenesis in cultures derived from adult human ovaries. *Reprod Biol Endocrinol* 2005;3:17. doi: 10.1186/1477-7827-3-17
- Chronowska E. Stem cell characteristics of ovarian granulosa cells-review. *Ann Anim Sci* 2012;12(2):151-7. doi: doi:10.2478/v10220-012-0012-8
- Liu X, Huang J, Chen T, Wang Y, Xin S, Li J, et al. Yamanaka factors critically regulate the developmental signaling network in mouse embryonic stem cells. *Cell Res* 2008;18(12):1177-89. doi: 10.1038/cr.2008.309
- Mao J, Zhang Q, Ye X, Liu K, Liu L. Efficient induction of pluripotent stem cells from granulosa cells by Oct4 and Sox2. *Stem Cells Dev* 2014;23(7):779-89. doi: 10.1089/scd.2013.0325
- Varras M, Griva T, Kalles V, Akhrivis C, Paparisteidis N. Markers of stem cells in human ovarian granulosa cells: is there a clinical significance in ART? *J Ovarian Res* 2012;5(1):36. doi: 10.1186/1757-2215-5-36
- Parte S, Bhartiya D, Telang J, Daithankar V, Salvi V, Zaveri K, et al. Detection, characterization, and spontaneous differentiation in vitro of very small embryonic-like putative stem cells in adult mammalian ovary. *Stem Cells Dev* 2011;20(8):1451-64. doi: 10.1089/scd.2010.0461
- Virant-Klun I, Rozman P, Cvjeticanin B, Vrtacnik-Bokal E, Novakovic S, Rüllicke T, et al. Parthenogenetic embryo-like structures in the human ovarian surface epithelium cell culture in postmenopausal women with no naturally present follicles and oocytes. *Stem Cells Dev* 2009;18(1):137-49. doi: 10.1089/scd.2007.0238
- Hirai H, Firpo M, Kikyo N. Establishment of leukemia inhibitory factor (LIF)-independent iPS cells with potentiated Oct4. *Stem Cell Res* 2015;15(3):469-80. doi: 10.1016/j.scr.2015.09.002
- Park S, Park HR, Lee WD, Hur CY, Lee YJ. Establishment of a xeno-free culture system that preserves the characteristics of placenta mesenchymal stem cells. *Cytotechnology* 2015;67(5):851-60. doi: 10.1007/s10616-014-9725-0
- Dyce PW, Wen L, Li J. In vitro germline potential of stem cells derived from fetal porcine skin. *Nat Cell Biol* 2006;8(4):384-90. doi: 10.1038/ncb1388
- Qing T, Shi Y, Qin H, Ye X, Wei W, Liu H, et al. Induction of oocyte-like cells from mouse embryonic stem cells by co-culture with ovarian granulosa cells. *Differentiation* 2007;75(10):902-11. doi: 10.1111/j.1432-0436.2007.00181.x
- Hao J, Li TG, Qi X, Zhao DF, Zhao GQ. WNT/beta-catenin pathway up-regulates Stat3 and converges on LIF to prevent

- differentiation of mouse embryonic stem cells. *Dev Biol* 2006;290(1):81-91. doi: 10.1016/j.ydbio.2005.11.011
20. Mathieu ME, Saucourt C, Mournetas V, Gauthereau X, Thézé N, Praloran V, et al. LIF-dependent signaling: new pieces in the Lego. *Stem Cell Rev Rep* 2012;8(1):1-15. doi: 10.1007/s12015-011-9261-7
 21. Hirai H, Karian P, Kikyo N. Regulation of embryonic stem cell self-renewal and pluripotency by leukaemia inhibitory factor. *Biochem J* 2011;438(1):11-23. doi: 10.1042/bj20102152
 22. Kossowska-Tomaszczuk K, De Geyter C, De Geyter M, Martin I, Holzgreve W, Scherberich A, et al. The multipotency of luteinizing granulosa cells collected from mature ovarian follicles. *Stem Cells* 2009;27(1):210-9. doi: 10.1634/stemcells.2008-0233
 23. Dzafic E, Stimpfel M, Virant-Klun I. Plasticity of granulosa cells: on the crossroad of stemness and transdifferentiation potential. *J Assist Reprod Genet* 2013;30(10):1255-61. doi: 10.1007/s10815-013-0068-0
 24. McNatty KP, Moore LG, Hudson NL, Quirke LD, Lawrence SB, Reader K, et al. The oocyte and its role in regulating ovulation rate: a new paradigm in reproductive biology. *Reproduction* 2004;128(4):379-86. doi: 10.1530/rep.1.00280
 25. Paulini F, Melo EO. The role of oocyte-secreted factors GDF9 and BMP15 in follicular development and oogenesis. *Reprod Domest Anim* 2011;46(2):354-61. doi: 10.1111/j.1439-0531.2010.01739.x
 26. Virant-Klun I, Skutella T, Stimpfel M, Sinkovec J. Ovarian surface epithelium in patients with severe ovarian infertility: a potential source of cells expressing markers of pluripotent/multipotent stem cells. *J Biomed Biotechnol* 2011;2011:381928. doi: 10.1155/2011/381928
 27. Gore-Langton RE, Daniel SA. Follicle-stimulating hormone and estradiol regulate antrum-like reorganization of granulosa cells in rat preantral follicle cultures. *Biol Reprod* 1990;43(1):65-72. doi: 10.1095/biolreprod43.1.65
 28. Wandji SA, Eppig JJ, Fortune JE. FSH and growth factors affect the growth and endocrine function in vitro of granulosa cells of bovine preantral follicles. *Theriogenology* 1996;45(4):817-32. doi: 10.1016/0093-691x(96)00011-8
 29. Robker RL, Richards JS. Hormone-induced proliferation and differentiation of granulosa cells: a coordinated balance of the cell cycle regulators cyclin D2 and p27Kip1. *Mol Endocrinol* 1998;12(7):924-40. doi: 10.1210/mend.12.7.0138
 30. Gilchrist RB, Lane M, Thompson JG. Oocyte-secreted factors: regulators of cumulus cell function and oocyte quality. *Hum Reprod Update* 2008;14(2):159-77. doi: 10.1093/humupd/dmm040