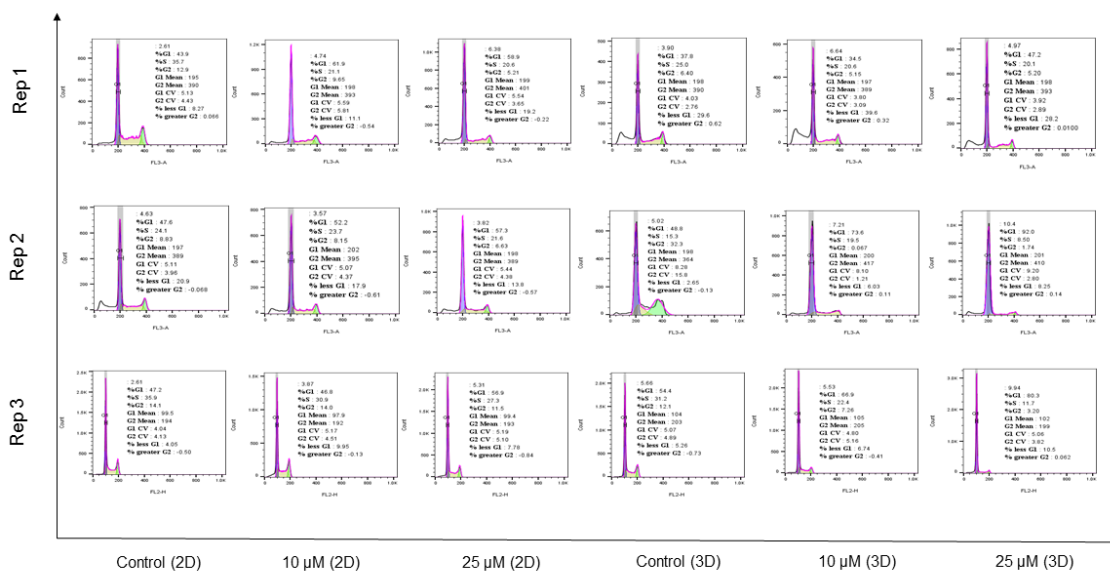
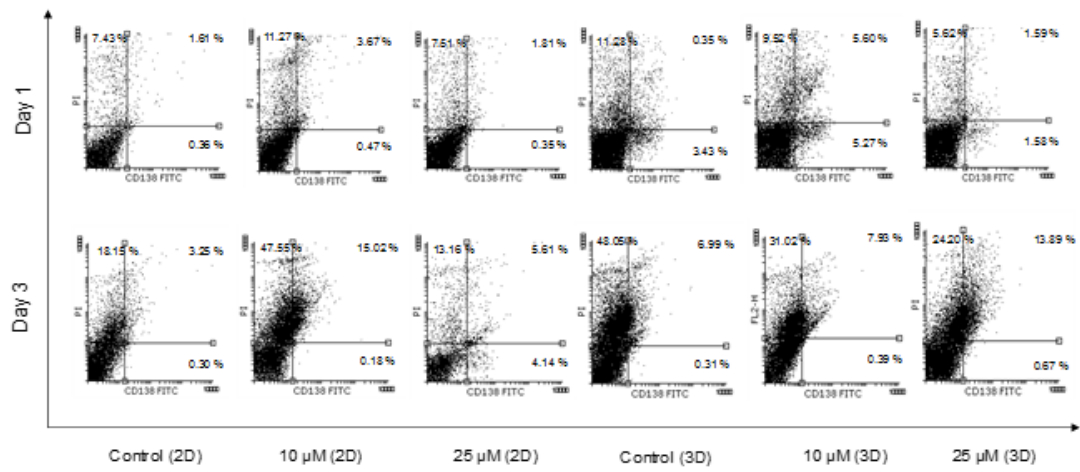


Supplementary file 1

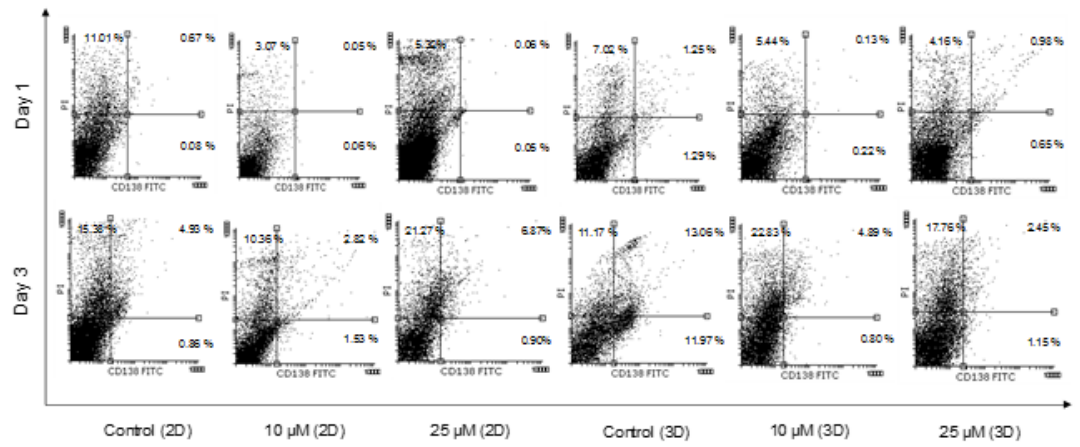


**Figure S1.** The cell cycle analysis of U266 cells after two days treatment with LY294002.

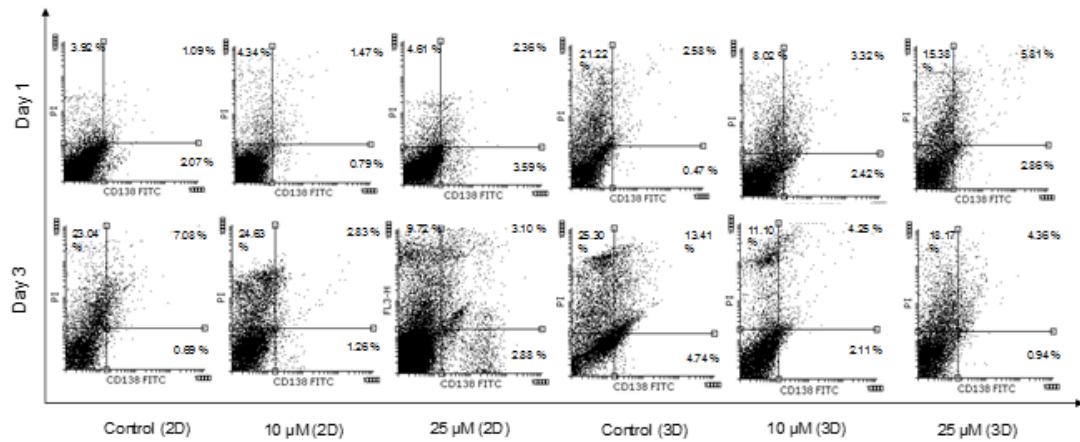
### Patient1 (CD138<sup>+</sup>PI<sup>+</sup>)



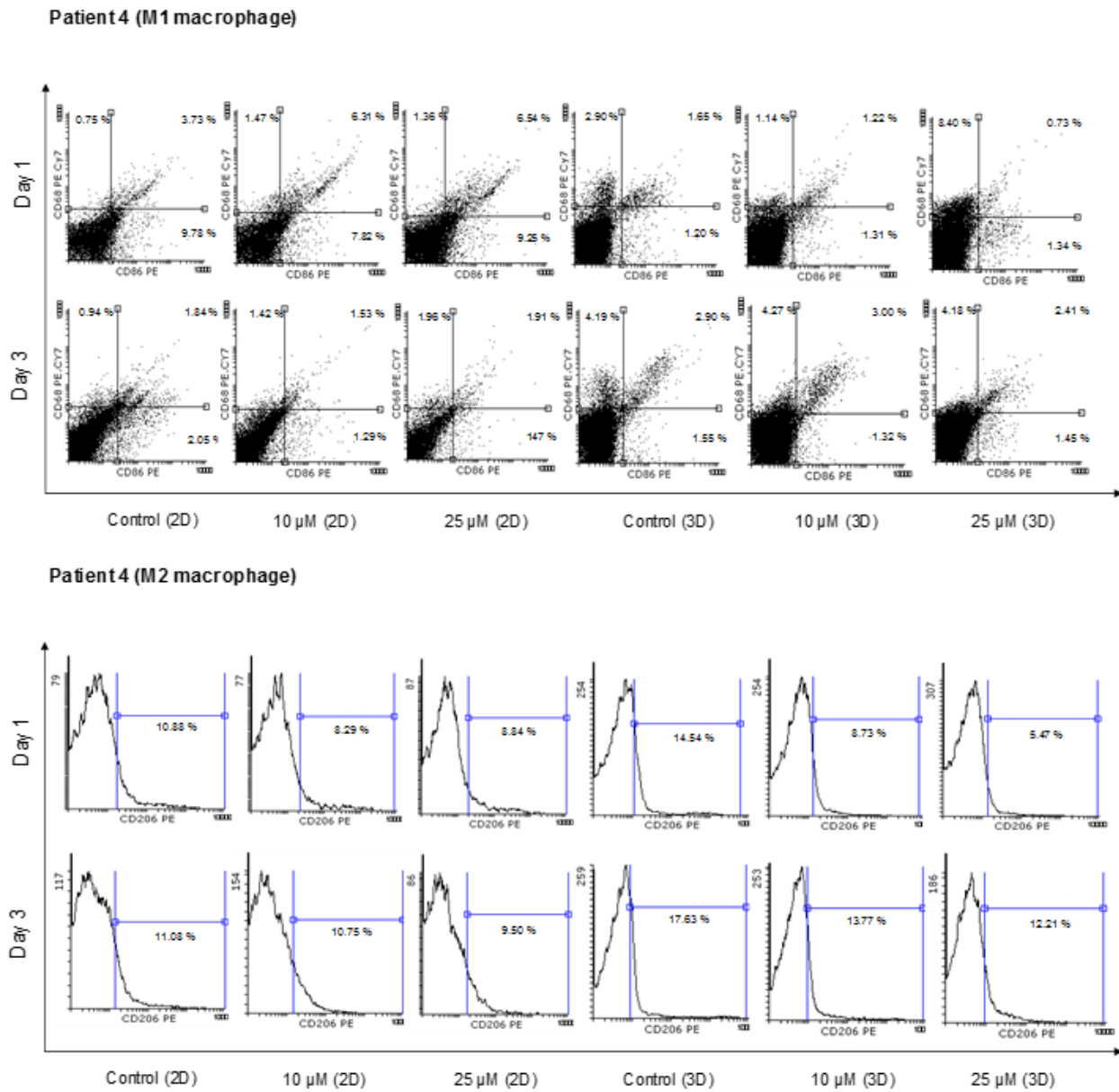
### Patient2 (CD138<sup>+</sup>PI<sup>+</sup>)



### Patient 3 (CD138<sup>+</sup>PI<sup>+</sup>)

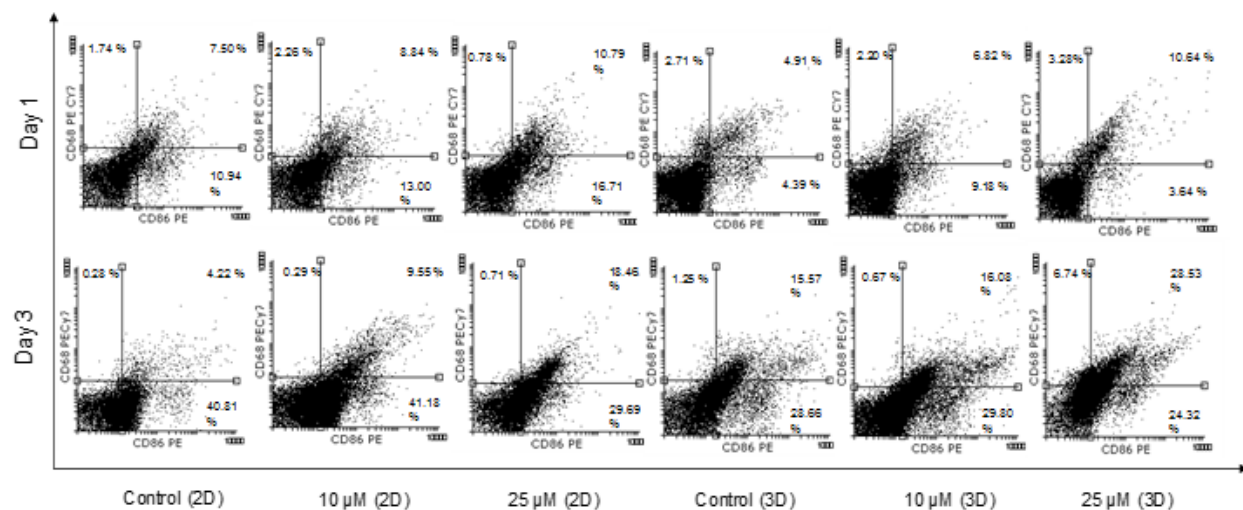


**Figure S2.** Flow cytometry diagrams of CD138<sup>+</sup>/ PI<sup>+</sup> primary myeloma cells.

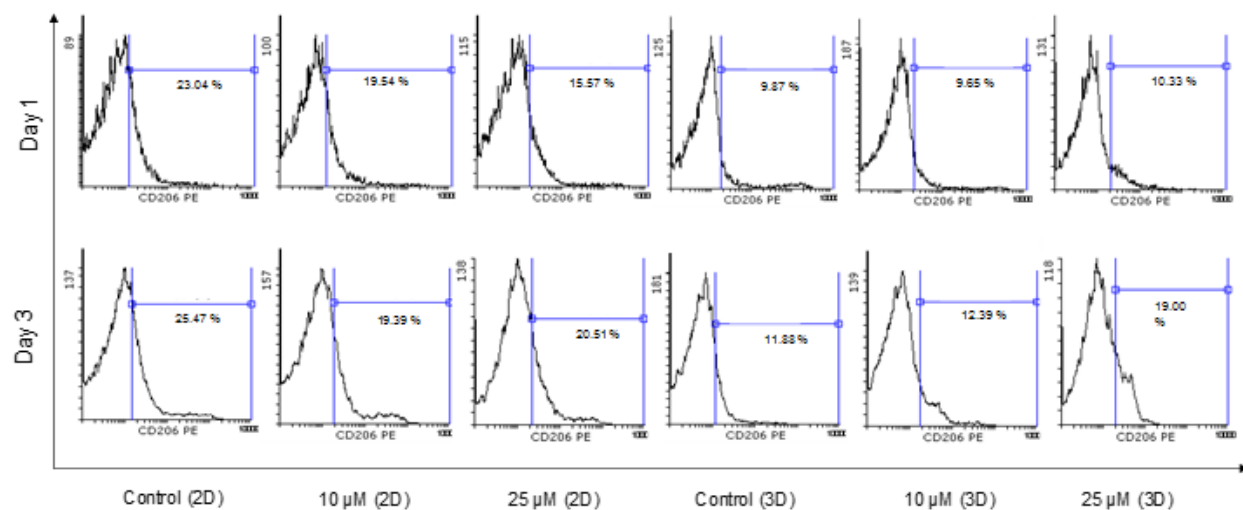


**Figure S3.** Macrophage immunophenotyping of patient 4-derived MNCs after treatments with LY294002.

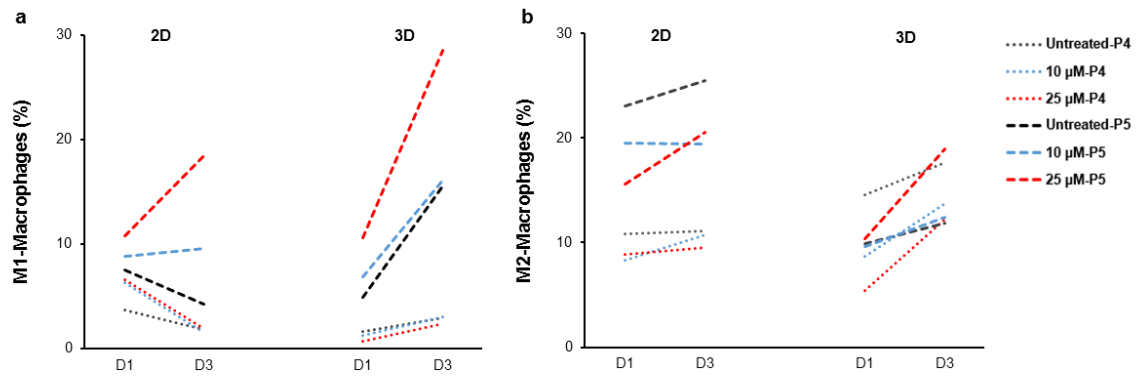
**Patient 5 (M1 macrophage)**



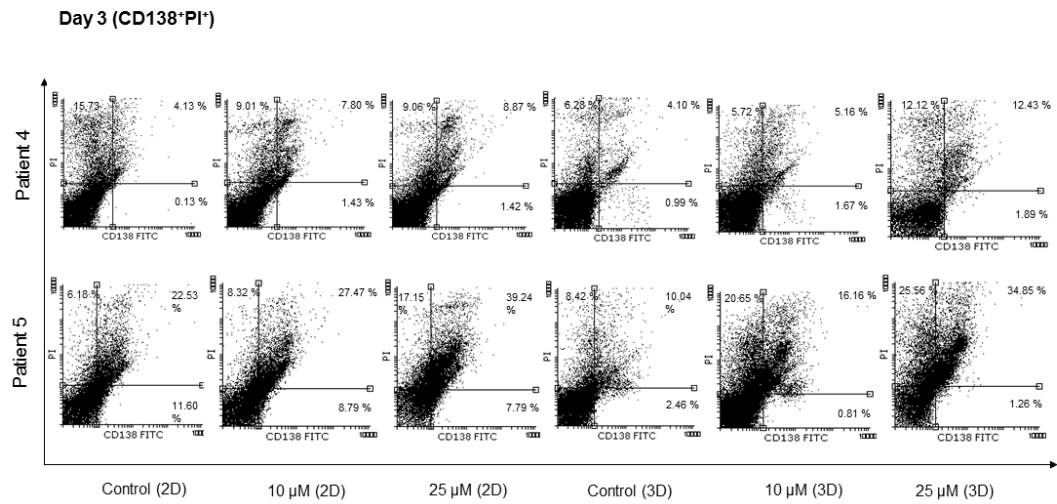
**Patient 5 (M2 macrophage)**



**Figure S4.** Macrophage immunophenotyping of patient 5-derived MNCs after treatments with LY294002.



**Figure S5.** Macrophage immunophenotyping graphs of patient-derived MNCs after treatments with LY294002.



**Figure S6.** Flow cytometry diagrams of CD138<sup>+</sup>/PI<sup>+</sup> primary MNCs derived from patients 4 and 5 after treatments with LY294002.

