

Supplementary

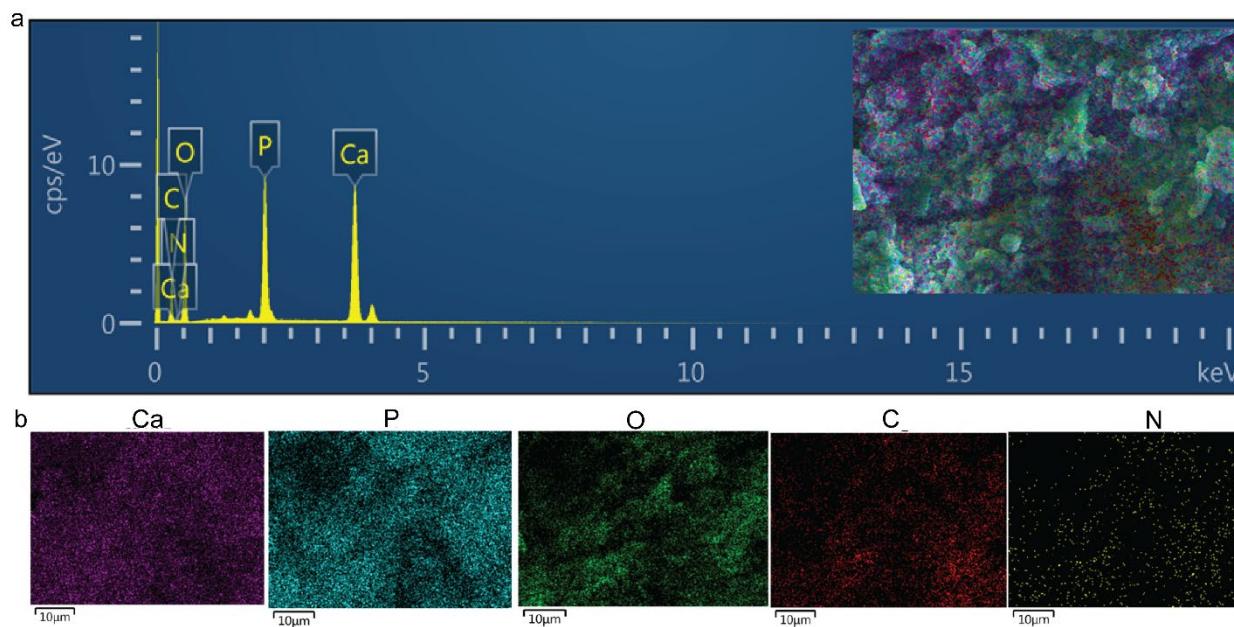


Figure S1. Energy dispersive X-ray spectroscopy (EDS) spectra and elemental mapping of *Litopanaeus vanamei* shell derived-chitosan scaffold. a. EDS analysis of the scaffold, b. Elemental mapping of C, N, O, P, and Ca of the scaffold.

Table SI. Element Analysis using EDS

Element	Weight Percentage
C	21.34
N	0.00
O	46.17
P	10.80
Ca	21.68